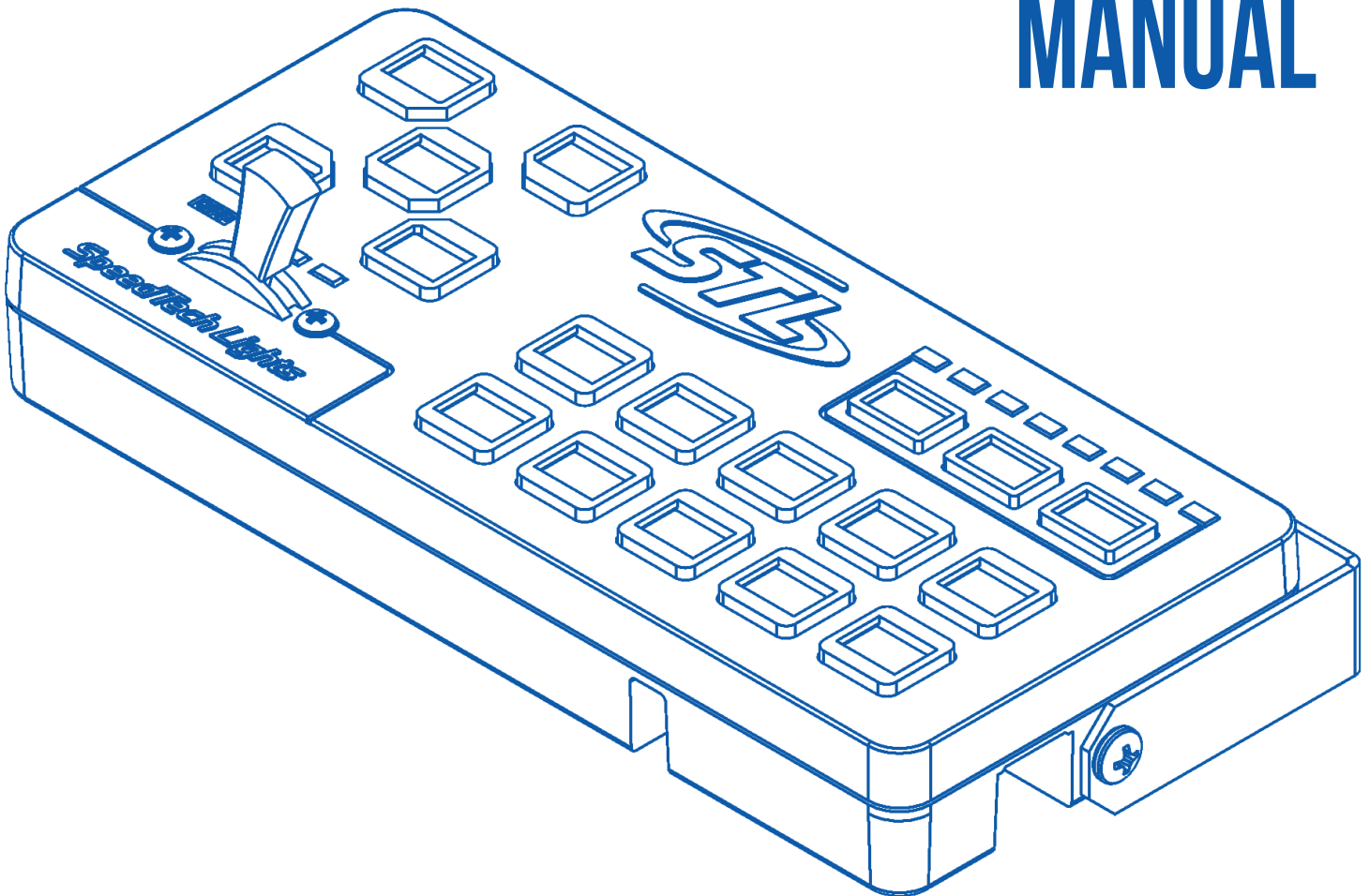


INTELLISIREN™
INTELLIGENCE



This serves as the manual for the IntelliSiren Controller.
The manual contains important information for
installing and operating the controller. Operating
the controller without reading the manual may
result in incorrect installation by the user.

INSTRUCTION MANUAL



This is the manual for the IntelliSiren Controller.
The manual contains important information for
installing and operating the controller.



System Specification / Warranty / Safety Regulations

System Specification		
Input Voltage	12 VDC	
Temperature Range	-20C to +45C	
Standby Current with no controller	0.1 Amps Max	
Standby Current with controller	0.2 Amps Max	
Logic Input (Gray)	Horn Ring	
Logic Input (Yellow)	Ignition	
Logic Input (Brown)	Night Mode	
Logic Input (White)	Park Kill	
Programmable Logic Inputs	4	
2 Outputs (high side drive)	20 Amps Each	Fused at 30A Each
12 Outputs (high side drive)	5 Amps Each	Each 4 outputs fused at 30A
8 Traffic Controller Output (low side drive)	3 Amps Ground	
Siren Output*	100W	
Siren Output Overload Protection	Short Circuit Protection	
Radio Rebroadcast	Available	
Maximum Total Input Current	60 Amps	All Combined
Controller Dimensions	6.9" x 3.2" x 1.0"	
Relay Dimensions	9.1" x 5.7" x 2.3"	
Speaker Impedance	Between 9 Ω and 12 Ω	

*Speaker impedance will affect output power, using wrong speaker may damage the system.

SpeedTech Lights Terms and Conditions

It is the user's responsibility to understand and obey all laws regarding emergency warning devices' use and application. The user should check all applicable city, state, and/or federal laws and regulations in order to ensure compliance. SpeedTech Lights Inc. assumes no liability for any loss resulting from the use of the warning lights and products. Proper installation is vital to the performance of the warning devices and the safe operation of the vehicle. SpeedTech Lights upholds the right to adjust or change its policies and/or pricing at any given time without notice. SpeedTech Lights reserves the right to make improvements and upgrades without notice. No dealer, distributor, employee, or individual of the company is authorized to change the return or warranty policy or the conditions of the SpeedTech Lights warranty.

For more information, visit our website at:
<http://www.speedtechlights.com/about/us-warranty.php>

SpeedTech Lights Limited Warranty

Limited Warranty: SpeedTech Lights warrants to the original retail purchaser that the IntelliSiren Controller will be free from defects in materials and workmanship for a period of five years (60 months) from the date of your original purchase, subject to specific exclusions set below.

EXCEPT FOR THE EXPRESS LIMITED WARRANTY SPEEDTECH LIGHTS HAS PROVIDED HEREIN, YOU TAKE THE PRODUCT AND ANY ACCESSORIES "AS IS". SPEEDTECH LIGHTS MAKES NO OTHER WARRANTY OR REPRESENTATION CONCERNING THE PRODUCT, AND EXPRESSLY DISCLAIMS ALL OTHER WARRANTIES AND CONDITIONS, EXPRESSED OR IMPLIED, STATUTORY OR OTHERWISE, OF WHATEVER KIND OR NATURE, INCLUDING BUT NOT LIMITED TO ANY AND ALL IMPLIED WARRANTIES, INCLUDING IMPLIED WARRANTIES OF MERCHANTABILITY AND FITNESS FOR A PARTICULAR PURPOSE.

This warranty is between the original purchaser only and SpeedTech Lights. This warranty is extended to the original purchaser provided the product is installed and operated in accordance with Manufacturer (SpeedTech Lights) Recommendations. All items must have the original serial number in order for the item to be repaired or replaced. Shipping costs to SpeedTech Lights will be borne by the customer. Return shipping will be prepaid by SpeedTech Lights. Customer is responsible for the condition in which the item is received; proper care and packaging is necessary to prevent damages in shipping. Insurance and tracking are highly recommended.

This warranty is voided by defects resulting from abuse, misuse, excess voltage, inadequate wiring, or improper installation. Accurate installation of SpeedTech Lights products require a professional installer to have a good understanding of automotive electronics, procedures, and systems. Evidence of disassembly, tampering, or broken products will not be covered under warranty. Merchandise is subject to inspection by SpeedTech Lights for repair or refurbished replacement and must be accompanied by the original Sales Receipt.

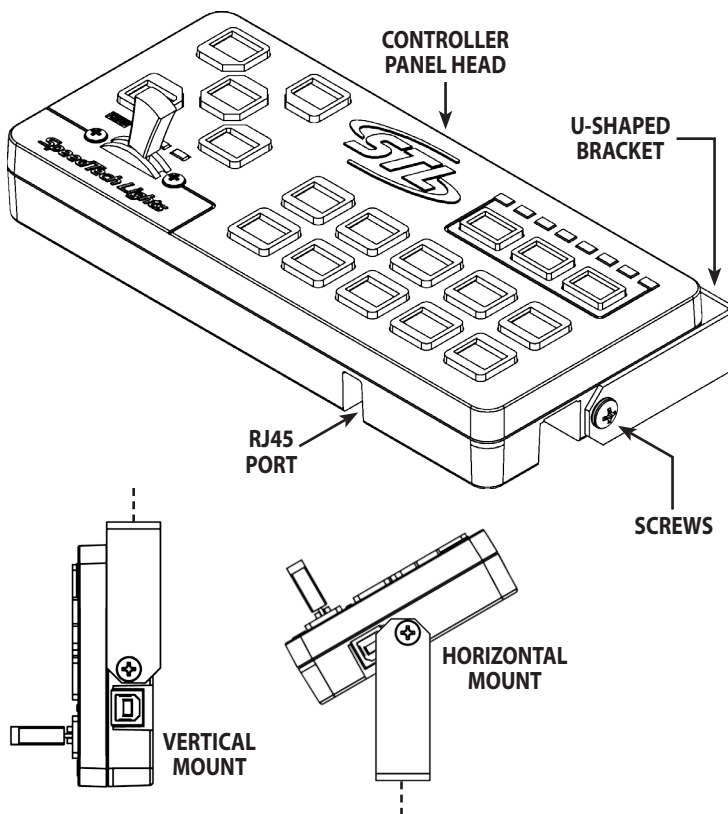
SpeedTech Lights is not liable for any coincidental or incidental damages or injury caused by the product and/or inadequate or inappropriate installation or wiring, to any persons or vehicles. SpeedTech Lights is not liable for any removal and/or reinstallation costs of products for warranty, service, return, or repair.

SpeedTech Lights is not responsible for unclaimed warranty items past 30 days of delivery to SpeedTech Lights.

Mounting Controller / Relay

Mounting Controller

See below for mounting options for the IntelliSiren Controller. To avoid warranty concerns, do not mount the relay in an exterior location:



Vertical Mount

Step 1: Remove the U-Shaped Bracket by unscrewing the two screws located on either side of the controller.

Step 2: Secure the U-Shaped Bracket in the desired location using 2 self-tapping screws.

Step 3: Using the screws removed in Step 1, secure the control panel head to the U-Shaped bracket.

Step 4: Connect the RJ45 cable to the RJ45 port (*see illustration*).

Horizontal Mount

Step 1: Remove the U-Shaped Bracket by unscrewing the two screws located on either side of the controller.

Step 2: Secure the U-Shaped Bracket in the desired location using 2 self-tapping screws.

Step 3: Using the screws removed in Step 1, secure the control panel head to the U-Shaped bracket.

Step 4: Connect the RJ45 cable to the RJ45 port (*see illustration*).

Mounting Relay

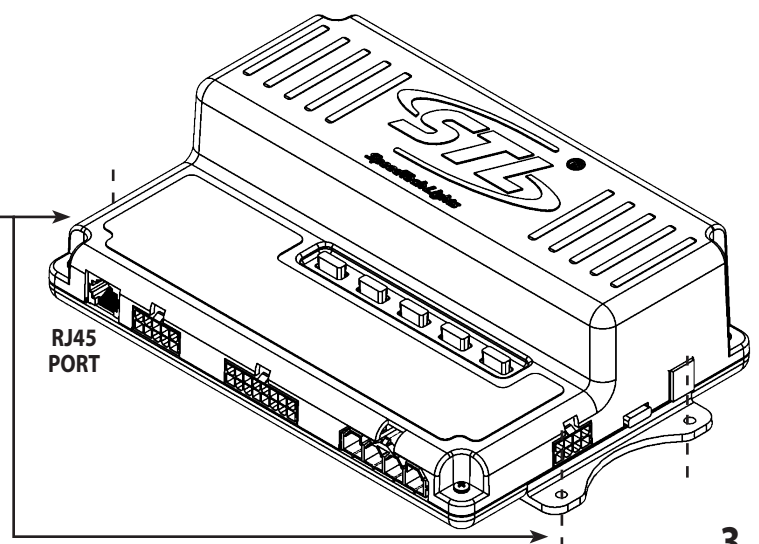
Use the instructions below to mount the IntelliSiren Relay.

Step 1: Mount the Relay to the intended surface utilizing 4 self-tapping screws.

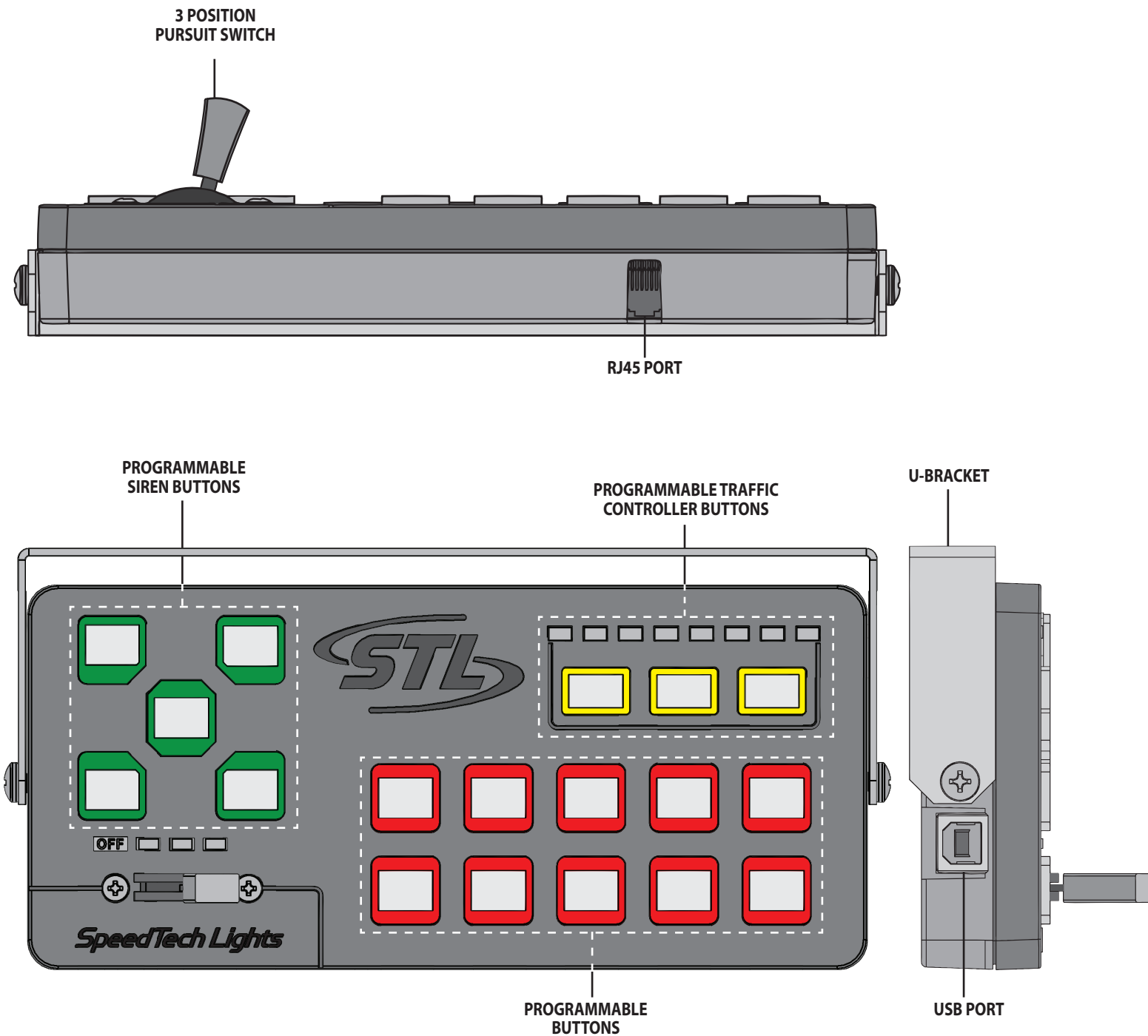
Step 2: Connect each wire into its intended port.

Use the wiring diagram on page 5.

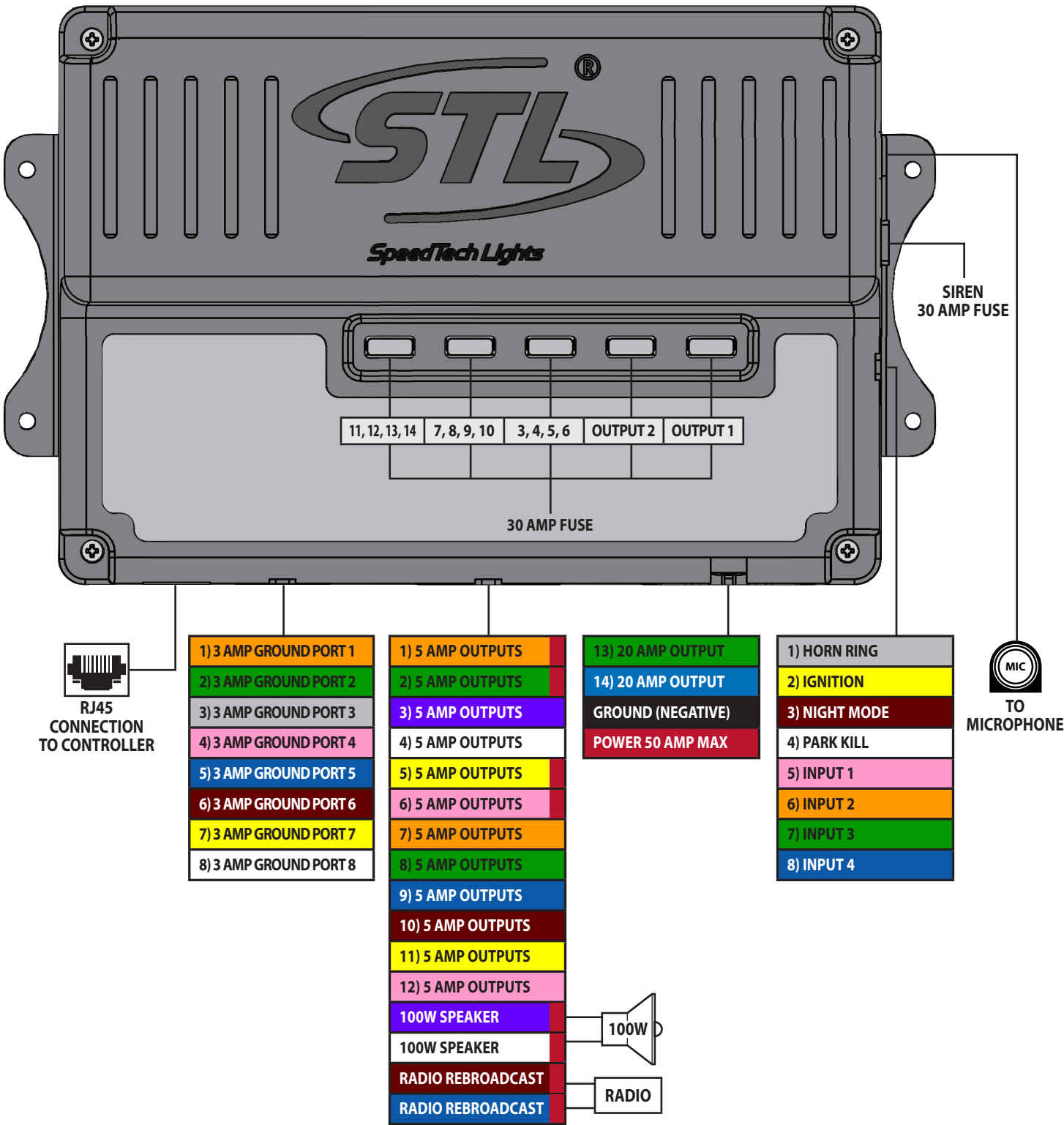
Step 3: Connect the RJ45 cable to the RJ45 port (*see illustration*).



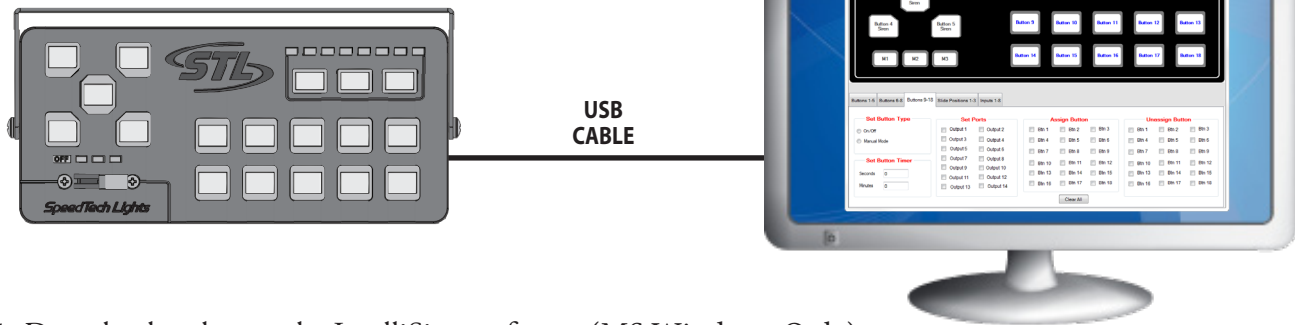
IntelliSiren Controller Content Diagram



IntelliSiren Wiring Diagram



Programming Controller

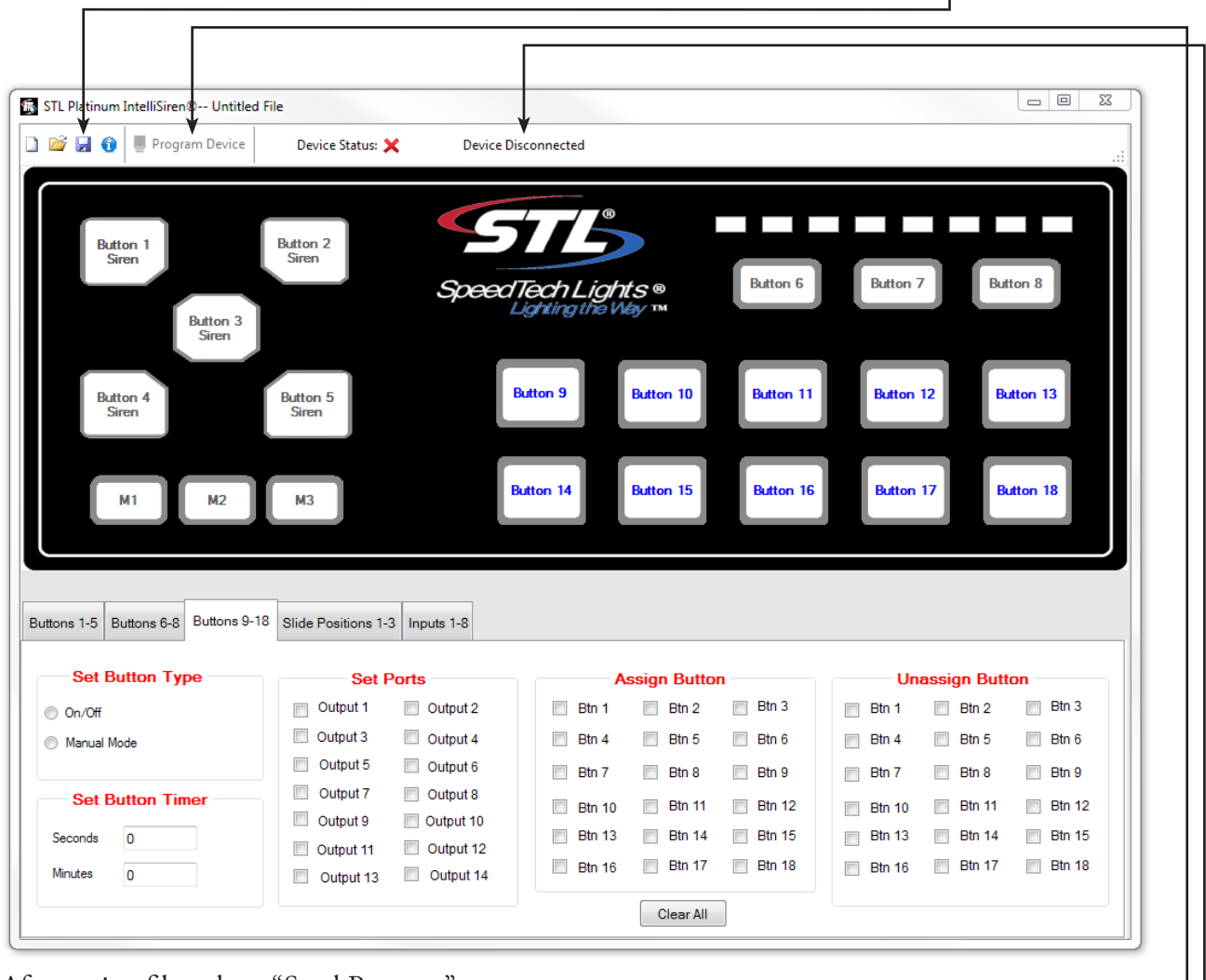


Step 1: Download and open the IntelliSiren software (MS Windows Only)

Step 2: Connect the provided USB cable to the controller and connect the other end of the USB to the computer.

Step 3: Program the buttons using the software.

Step 4: When finished programming the software, click on the save icon in the menu bar.



Step 5: After saving file, select: "Send Program".

Step 6: Disconnect the controller from the computer when software states: "Device has been successfully programmed!"