



MOUNTING BRACKETS

MOUNTING BRACKETS

STL ADJUSTABLE HEADLINER BRACKET

SKU Q-122

FEATURES

- L-shaped bracket
- Attaches to the headliner of the vehicle
- Bracket is adjustable to suit all mounting needs
- Perfect for mounting dash lights, grille lights, or individual LED units
- Hardware for adjusting bracket not included

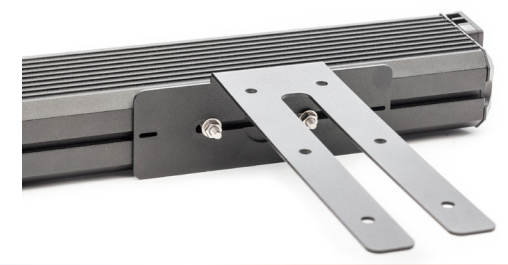


STL STATIC HEADLINER BRACKET

SKU Q-121

FEATURES

- Attaches to the headliner of the vehicle
- 90 degrees L-shaped bracket
- Perfect for mounting dash lights, grille lights, or individual LED units



STL HEADACHE RACK LIGHT BAR BRACKETS

SKU Q-990

FEATURES

- Headache rack mounting bracket
- Perfect for mounting Light bars to headache rack



STL HEADACHE RACK BEACON BRACKET

SKU Q-991

FEATURES

- Headache rack mounting bracket
- Perfect for mounting beacons (magnetic/non-magnetic)



STL UNIVERSAL Z-SHAPED BRACKETS

SKU Q-032

FEATURES

- Z-shaped brackets
- Set Includes 2 mounting brackets
- Pairable with all track-mounted products



STL VEHICLE SPECIFIC GUTTER BRACKETS

SKU Q-15X

FEATURES

- Vehicle specific mounting brackets for 47" or longer lightbars
- Q-150: Dodge Charger
- Q-151: Chevrolet Tahoe, Suburban, Avalanche
- Q-152: Ford Crown Victoria
- Q-153: Ford Explorer
- Q-154: Dodge Durango, Dakota / Jeep Cherokee
- Q-155: Chevrolet Impala
- Q-156: Ford F-Series
- Q-157: Ford Expedition
- Q-158: Ford Interceptor Sedan



STL GUTTER MOUNT BRACKETS

SKU Q-020

FEATURES

- Standard gutter mount brackets for 47" or longer lightbars
- Set Includes brackets, screws, washers, nuts, and bolts



STL HALF OCTO BRACKET

SKU Q-113

FEATURES

- 90 degree L-shaped brackets
- Fits the STL Half Octo



STL STRIKER / VIRTUE SURFACE MOUNT BRACKETS

SKU Q-037

FEATURES

- Surface mount end cap brackets
- Fits both STL Striker and Virtue Series units



STL SUCTION CUP

SKU Q-010

FEATURES

- 3 Suction Cups per unit
- Metal brackets for durability



STL 90° SUCTION CUP

SKU Q-900

FEATURES

- L Bracket + Suction Cup
- 3 Suction Cups per unit
- Metal brackets for durability
- 90° windshield mount capability

