



MOUNTING BRACKETS

MOUNTING BRACKETS

# STL SUCTION CUP BRACKET

SKU Q-SUCUP / Q-90SUCUP / Q-360SUCUP

## FEATURES

- Adjustable suction cup bracket
- Offered in 3 models:
  - Suction Cup Bracket
  - 90° Suction Cup Bracket
  - 360° Suction Cup Brackets (includes 2 end cap brackets)



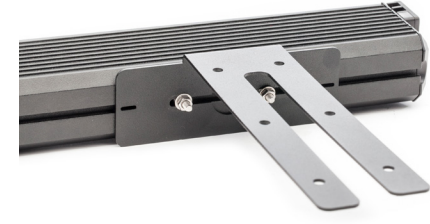
# STL STATIC HEADLINER BRACKET

SKU Q-STATHB

DIMENSIONS 4.75" L X 1.75" H X 7" D

## FEATURES

- L-shaped bracket
- Attaches to headliner of vehicle
- Perfect for mounting dash lights, grille lights, or individual LED units



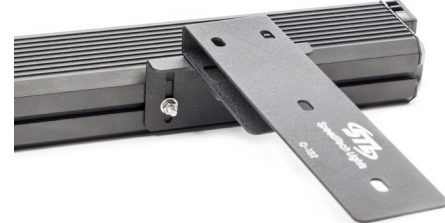
# STL ADJUSTABLE HEADLINER BRACKET

SKU Q-ADJHB

DIMENSIONS 3.5" L X 1.75" H X 7.5" D

## FEATURES

- Adjustable L-shaped bracket
- Attaches to headliner of vehicle
- Perfect for mounting dash lights, grille lights, or individual LED units



# STL SURFACE MOUNT END CAPS

SKU Q-SMEC

## FEATURES

- Surface mount brackets
- Compatible with STL Striker & Virtue Series products
- Set includes 2 end cap mounting brackets



# STL UNIVERSAL Z-SHAPED BRACKETS

SKU Q-UNIZ

DIMENSIONS 8.75" L X 3.5" H X 1.5" D

## FEATURES

- Z-shaped brackets
- Compatible with all track-mounted products
- Set includes 2 mounting brackets



# STL LICENSE PLATE BRACKET

SKU Q-LPB

## FEATURES

- Front/Rear license plate bracket
- Compatible with STL Z Series products
- Allows for vertical or horizontal mounting
- Horizontal setup dimensions: 15" L x 1.5" H x .75" D
- Vertical setup dimensions: 15" L x 5" H x .75" D



# STL SINGLE STATIC BRACKET

SKU Q-SSTATB

DIMENSIONS 5" L X 1.25" H X 1.25" D

## FEATURES

- L-shaped bracket
- Compatible with STL Z Series products



# STL DUAL STATIC HORIZONTAL BRACKET

SKU Q-DSHB

DIMENSIONS 10" L X 1.25" H X 1.25" D

## FEATURES

- L-shaped bracket
- Compatible with STL Z Series products



# STL DUAL STATIC VERTICAL BRACKET

SKU Q-DSVB

DIMENSIONS 5" L X 2.25" H X 1.25" D

## FEATURES

- Double stack L-shaped bracket
- Compatible with STL Z Series products



# STL HALF OCTO BRACKET

SKU Q-HOB

DIMENSIONS 7.6" L X 2.5" H X 1.5" D

## FEATURES

- L-shaped bracket
- Fits the STL Half Octo



# STL DOUBLE STACK Z-X SURFACE MOUNT FLANGE

SKU Q-Z3FLANGE / Q-Z4FLANGE / Q-Z6FLANGE

AVAILABLE COATINGS

## FEATURES

- White, Silver or Black double stack flange
- Compatible with STL Z Series products
- Offered in 3 sizes:
  - Z-3 Flange dimensions: 3.5"L x 2.5"H x .5"D
  - Z-4 Flange dimensions: 4.25"L x 2.5"H x .5"D
  - Z-6 Flange dimensions: 5.25"L x 2.5"H x .5"D



# STL FLARE SERIES SURFACE MOUNT FLANGE

SKU Q-SFFLANGE / Q-BFFLANGE

AVAILABLE COATINGS

## FEATURES

- Silver or Black flush mount flange
- Compatible with STL Flare Series

